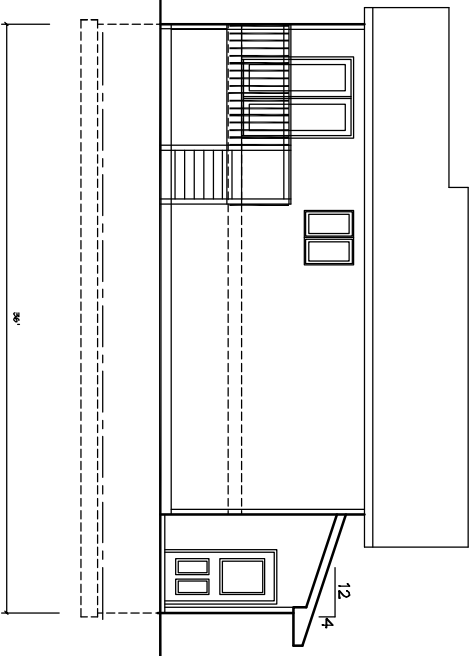
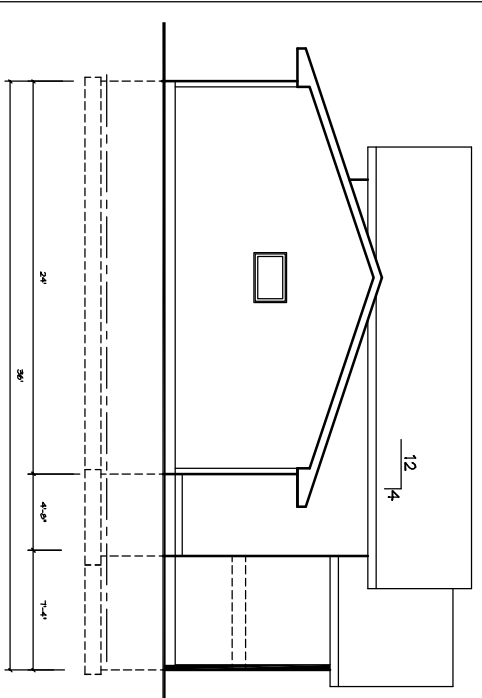


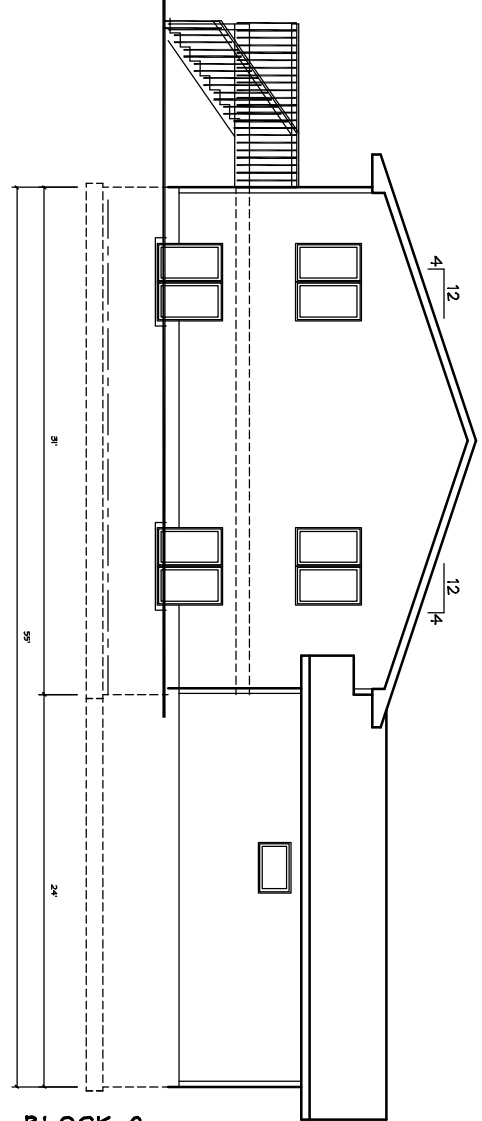
NORTH ELEVATION
Scale: 1/8" = 1'-0"



WEST ELEVATION
Scale: 1/8" = 1'-0"



EAST ELEVATION
Scale: 1/8" = 1'-0"



SOUTH ELEVATION
Scale: 1/8" = 1'-0"

LOT 8, BLOCK 2

ICWC 2006
120 JACOBS WAY - BEMIDJI, MN
EXTERIOR ELEVATIONS

DATE PLOTTED:	
2 JUN 06	FSD
19 JUN 06	EDS

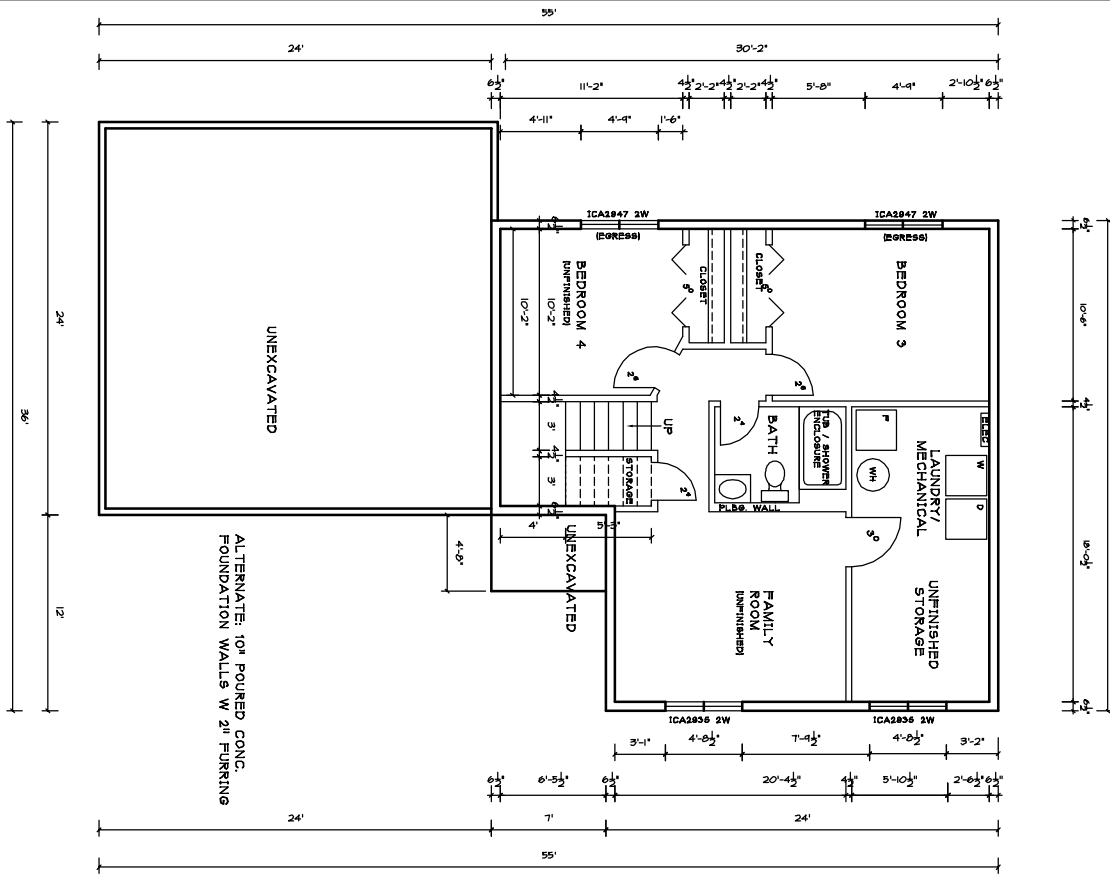


Beltrami County Housing
and Redevelopment Authority
P.O. Box 292 - Bemidji, MN 56601
(218) 444-4132 - FAX: 218-444-4132

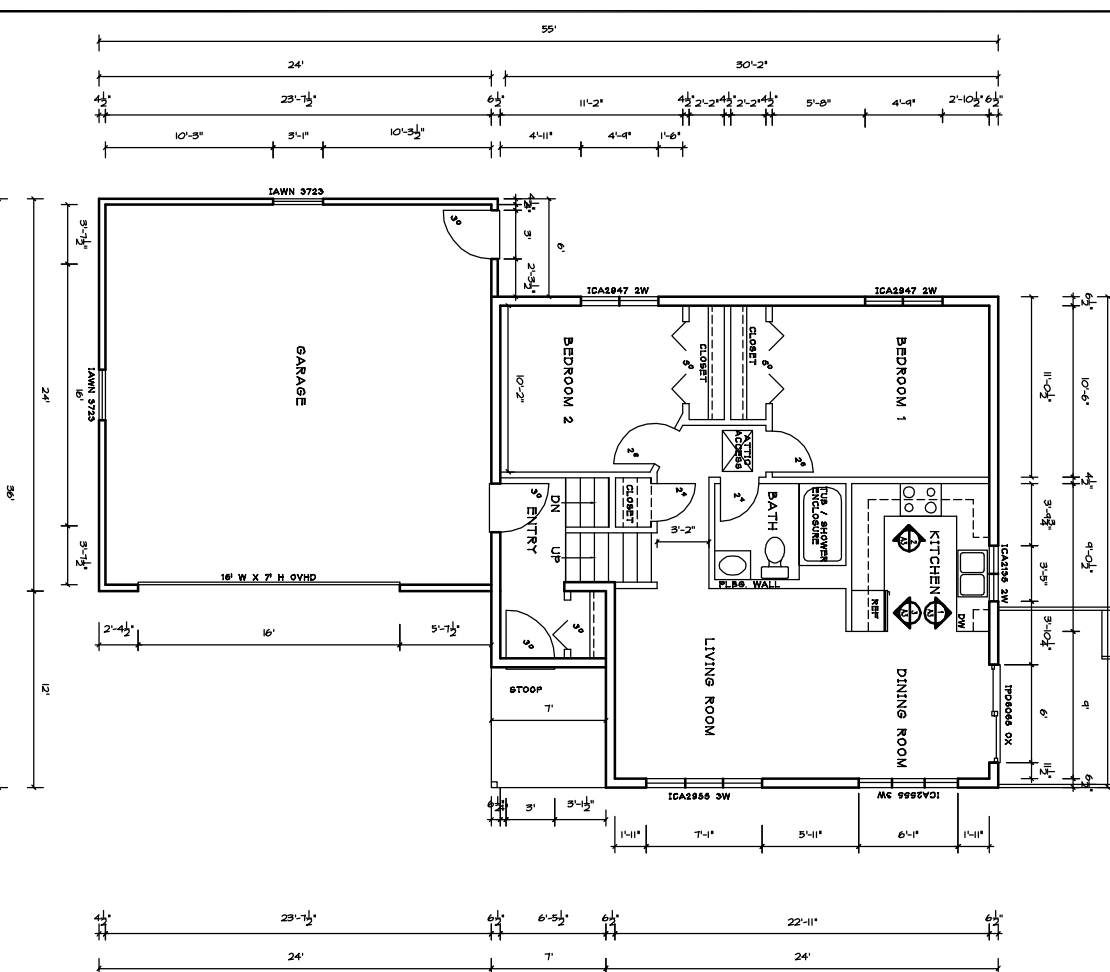
LUCACHICK ARCHITECTURE, INC.
218 MINNESOTA AVENUE - BEMIDJI, MN. 56601
MAIL TO: P.O. BOX 218 - BEMIDJI, MN. 56601-0218
PHONE: (218) 758-3305 FAX: (218) 758-0457

DRAWING NO
A1
OF

GROSS SQUARE FEET = 846 S.F. MAIN FLOOR
 GROSS SQUARE FEET = 846 S.F. LOWER FLOOR
 TOTAL GROSS SQUARE FEET = 1,692 S.F. BOTH FLOORS



LOWER FLOOR PLAN
 Scale: 1/8" = 1'-0"



MAIN FLOOR PLAN
 Scale: 1/8" = 1'-0"

LOT 8, BLOCK 2

ICWC 2006
 120 JACOBS WAY - BEMIDJI, MN
 LOWER & MAIN FLOOR PLAN

DATE PLOTTED:	
2 JUN 06	FSB
19 JUN 06	EDS



Beltrami County Housing
 and Redevelopment Authority
 P.O. Box 260 - Bemidji, MN 56601
 (218) 444-4322 - FAX: 218-444-4322

LUCACHICK ARCHITECTURE, INC.
 218 MINNESOTA AVENUE - BEMIDJI, MN. 56601
 MAIL TO: P.O. BOX 218 - BEMIDJI, MN. 56601-0218
 PHONE: (218) 758-3305 FAX: (218) 758-0407

DRWING NO
A2
 OF