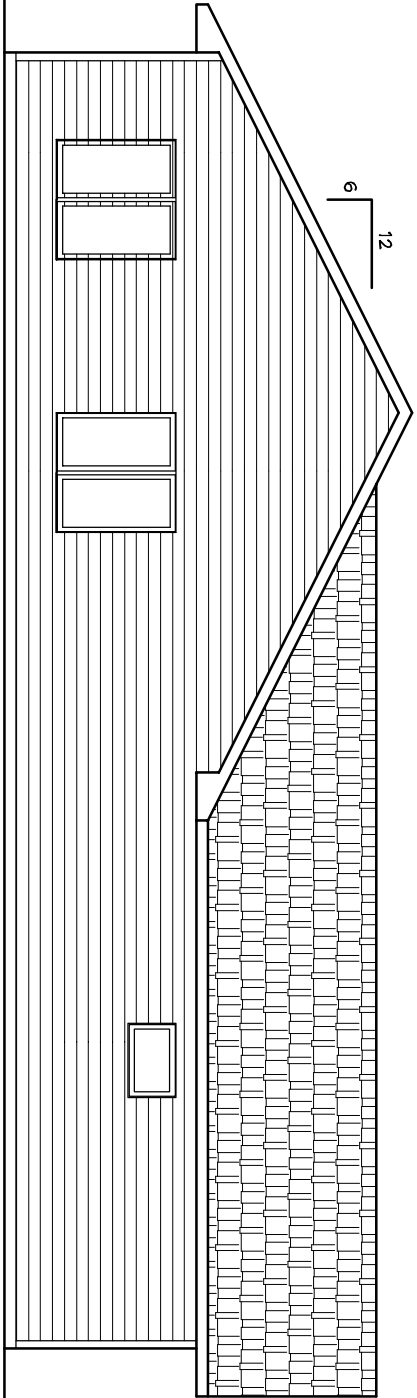
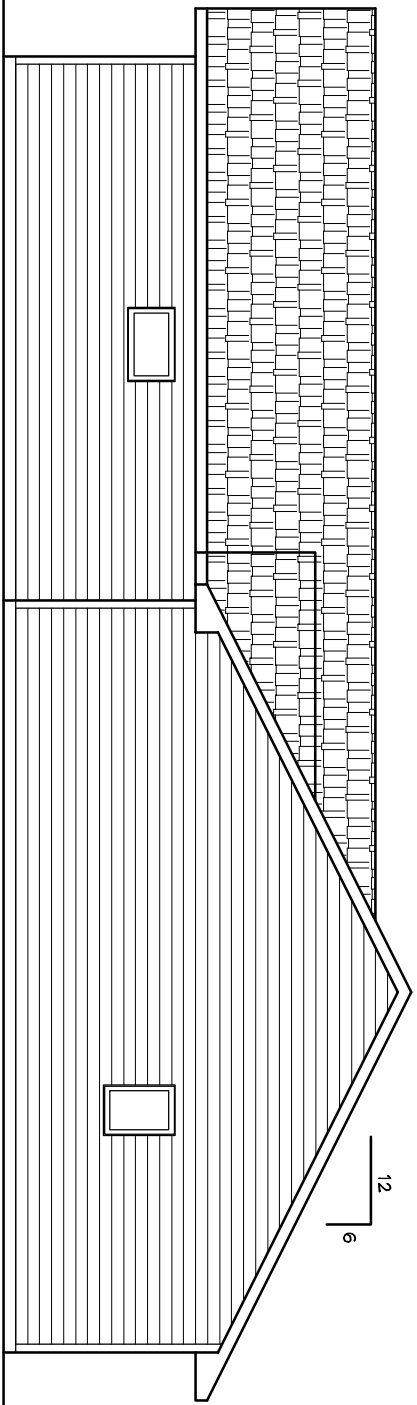


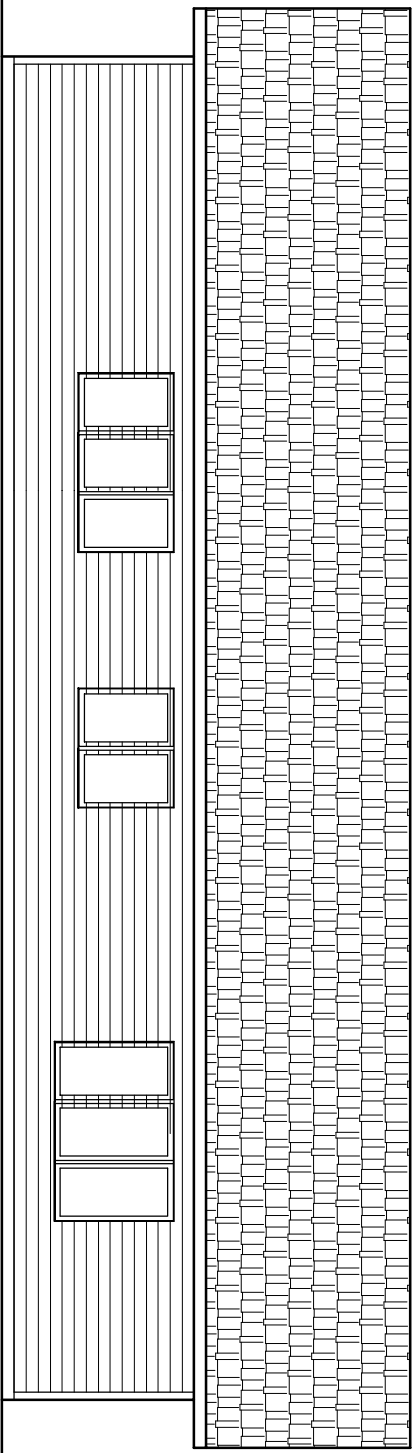
**FRONT ELEVATION**  
Scale: 1/4" = 1'-0"



**SIDE ELEVATION**  
Scale: 1/4" = 1'-0"



**SIDE ELEVATION**  
Scale: 1/4" = 1'-0"



**BACK ELEVATION**  
Scale: 1/4" = 1'-0"

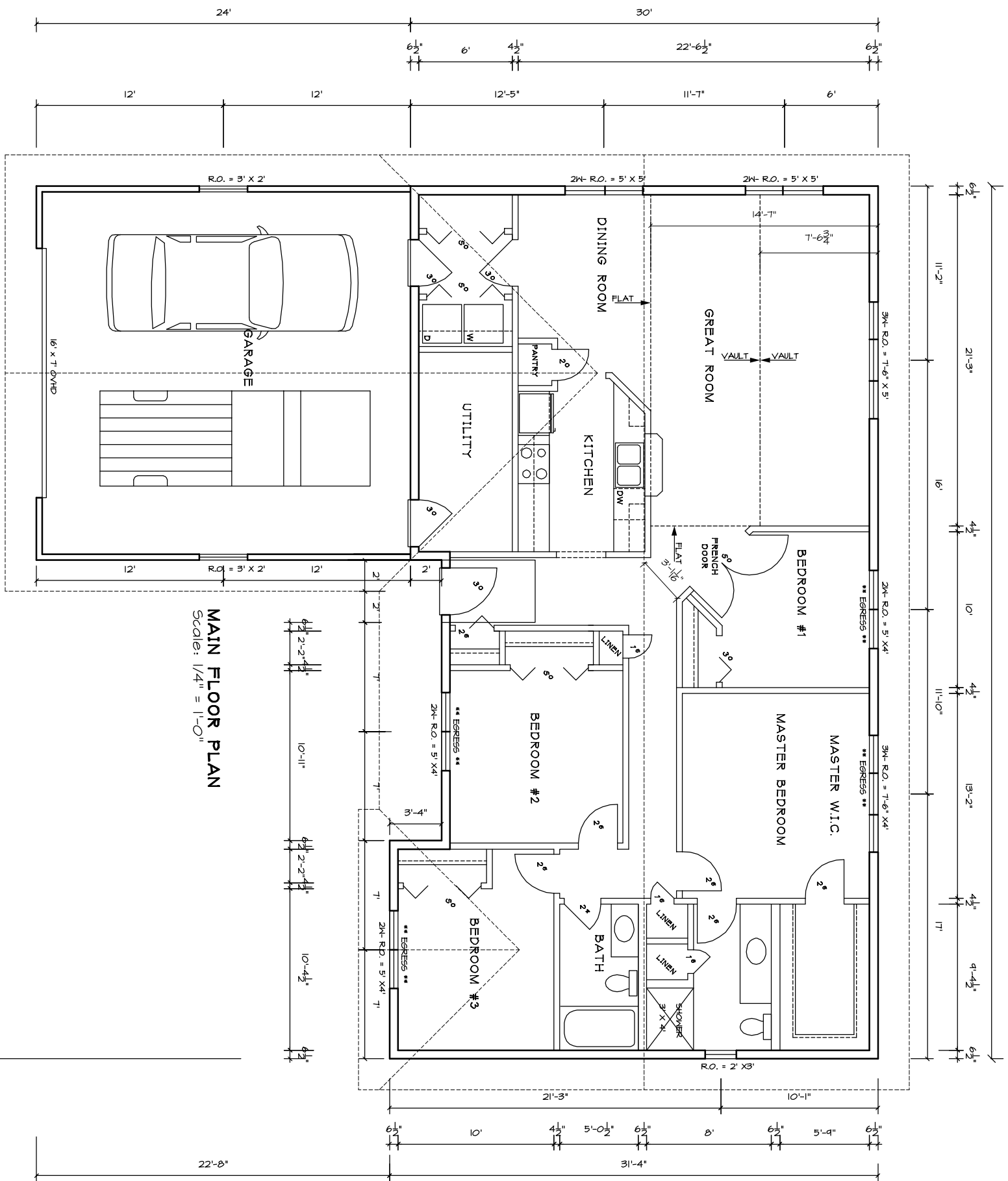
DATE PLOTTED:	
10 JULY 09	PSB


**LHDC** Headwaters Housing Development Corporation  
A subsidiary of the Headwaters Regional Development Commission  
403 Fourth Street NW, P.O. Box 906 -- Bemidji, MN 56604-0906  
(218) 751-3108 -- FAX: 218-751-3645

**LUCACHICK ARCHITECTURE, INC.**  
218 MINNESOTA AVENUE - BEMIDJI, MN. 56601  
MAIL TO: P.O. BOX 219 - BEMIDJI, MN. 56619-0219  
PHONE: (218) 758-2305 FAX: (218) 758-0407

DRAWING NO. **A1**  
OF  
EXTERIOR ELEVATIONS

MAIN FLOOR SQUARE FOOTAGE.....1,638 S.F.



DRAWINGS NO. <b>A2</b> OF	<b>2009 ICWC</b>	DATE PLOTTED:	 <b>HDC</b> Headwaters Housing Development Corporation A subsidiary of the Headwaters Regional Development Commission 403 Fourth Street NW, P.O. Box 906 - Bemidji, MN 56604-0906 (218) 751-3008 - FAX: 218-751-3045	<b>LUCACHICK ARCHITECTURE, INC.</b> 218 MINNESOTA AVENUE - BEMIDJI, MN. 56601 MAIL TO: P.O. BOX 218 - BEMIDJI, MN. 56619-0218 PHONE: (218) 759-2305 FAX: (218) 759-0407
	4 BEDROOM HOUSE LOT #3 BLOCK #3	10 JULY 09		
MAIN FLOOR PLAN				