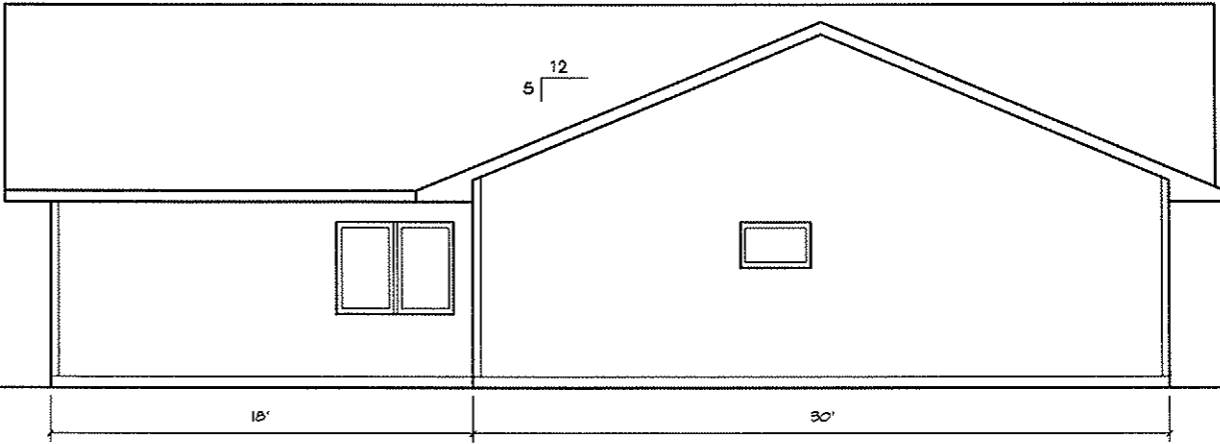
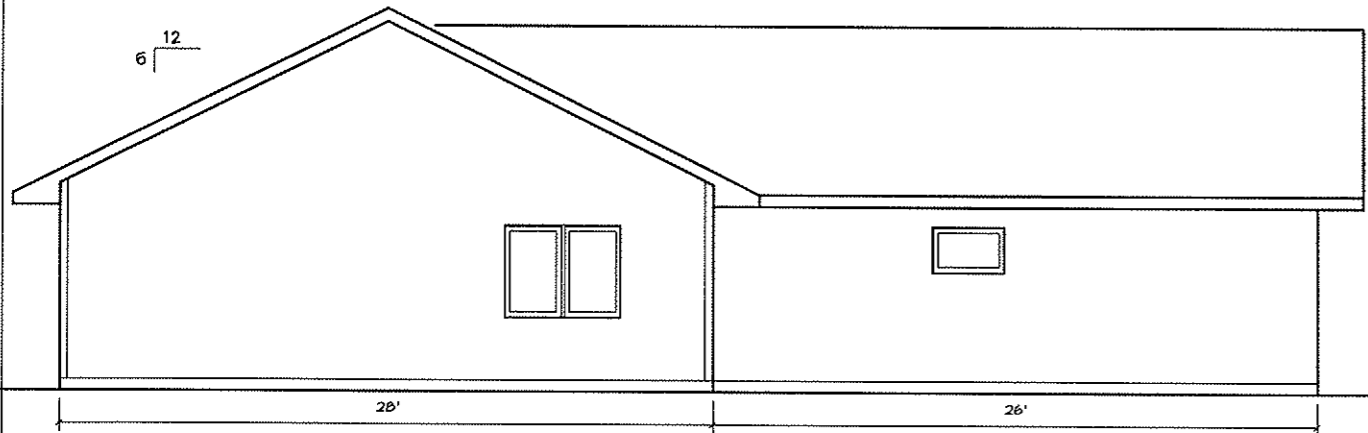


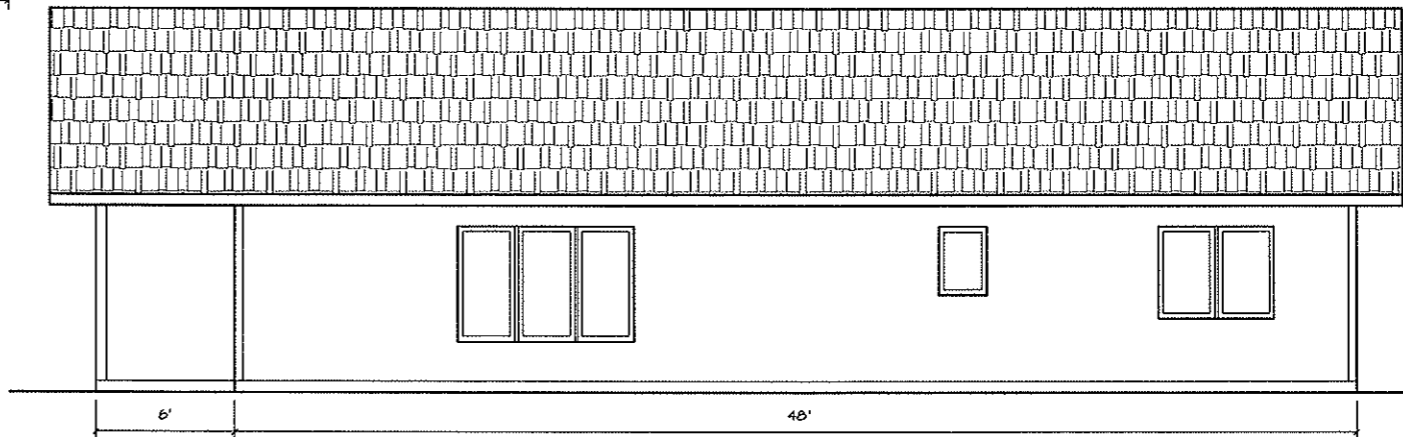
FRONT ELEVATION
Scale: 1/4" = 1'-0"



LEFT ELEVATION
Scale: 1/4" = 1'-0"



RIGHT ELEVATION
Scale: 1/4" = 1'-0"



BACK ELEVATION
Scale: 1/4" = 1'-0"

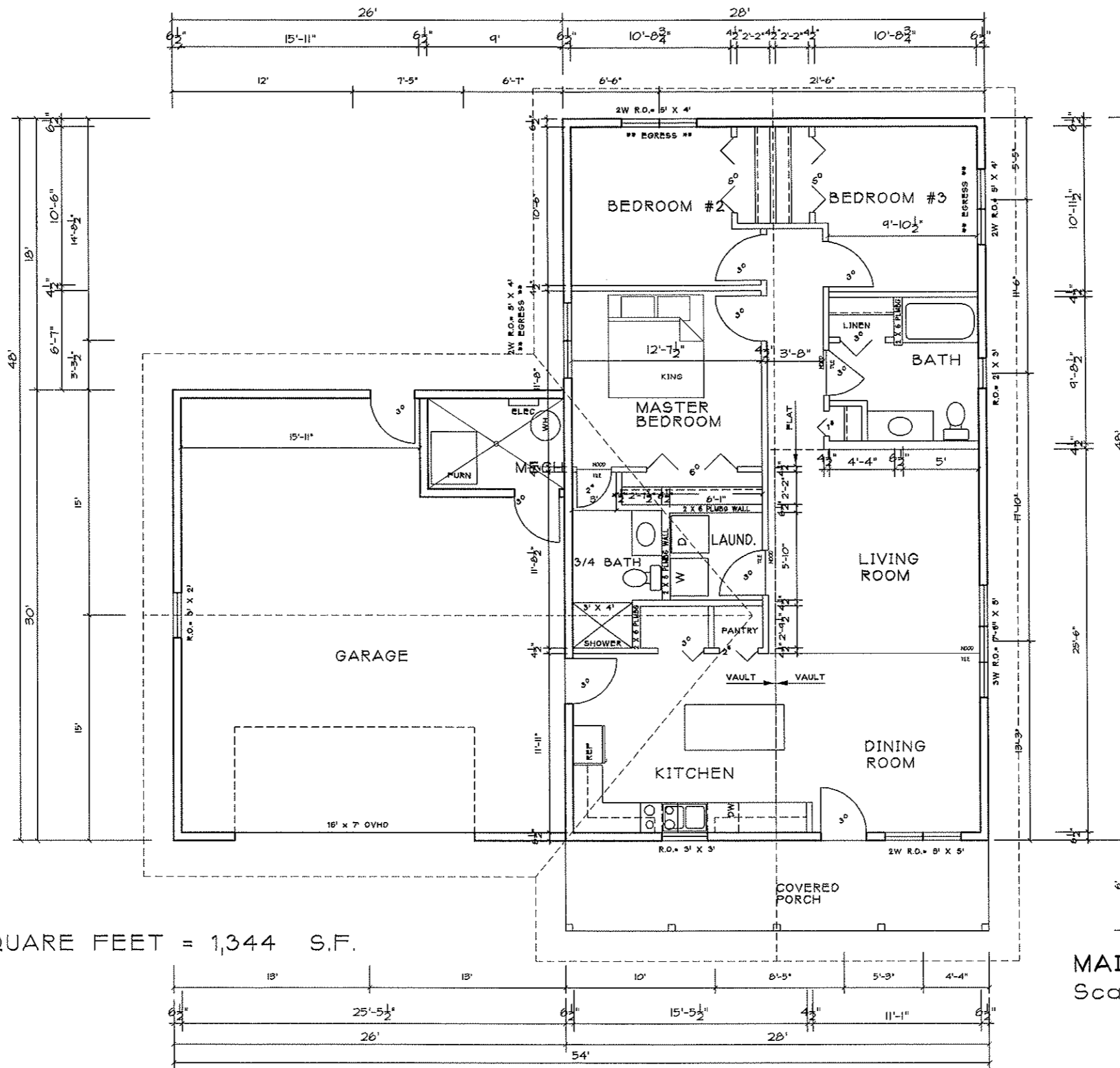
LUGAGHICK ARCHITECTURE, INC.
218 MINNESOTA AVENUE - BEMIDJI, MN. 56601
MAIL TO: P.O. BOX 219 - BEMIDJI, MN. 56615-0219
PHONE: (218) 758-2305 FAX: (218) 758-0407

THDC *Thinkers: Theory Development Corporation*
A subsidiary of the Minnesota Regional Development Commission
407 Fourth Street NE, P.O. Box 809 - Bemidji, MN 56601-0809
(218) 758-2300 - FAX: 218-758-2305

| DATE PLOTTED: | PSG | PSB |
|---------------|-----|-----|
| 31 JUL 09 | | |
| 4 AUG 09 | | |

BLACKDUCK HOUSE 2009-2010
3 BEDROOM HOUSE #2
EXTERIOR ELEVATIONS

DRAWING NO.
A1
OF



TOTAL GROSS SQUARE FEET = 1,344 S.F.

MAIN FLOOR PLAN
Scale: 1/4" = 1'-0"

LUCACHICK ARCHITECTURE, INC.
218 MINNESOTA AVENUE - BEMIDJI, MN. 56601
MAIL TO: P.O. BOX 319 - BEMIDJI, MN. 56618-0319
PHONE: (218) 759-3305 FAX: (218) 759-0407

HDC Headquarters: Housing Development Corporation
A subsidiary of The Hutchinson Regional Development Commission
423 Fourth Street NE, P.O. Box 606 - Bemidji, MN 56604-0606
202 E 2nd St - Bemidji, MN 56601 - FAX: 218-759-3306

| DATE PLOTTED: | BY: | FOR: |
|---------------|-----|------|
| 31 JUL 09 | RSB | |
| 4 AUG 09 | RSB | |

BLACKDUCK HOUSE 2009-2010
3 BEDROOM HOUSE #2
MAIN FLOOR PLAN

DRAWING NO.
A2
OF